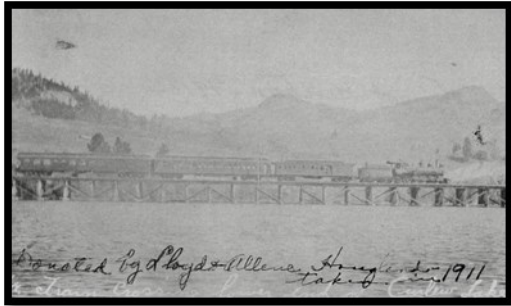


## Newsletter of the Ferry County Historical Society

### Mission Statement

The purpose of the Ferry County Historical Society is to preserve, exhibit, interpret, and promote public interest in objects, documents, [photographs], and all other materials related to the history and prehistory of the geographical area known as Ferry County.

## Great Northern Railway Historical Society



Before: This is the photograph of a Great Northern train on the Curlew Lake trestle, that was sent to the Great Northern Railway Historical Society



After: This photograph has been enhanced to show more details of the Great Northern train



Although the Great Northern Railway has been gone from the Pacific Northwest scene for many years, it still has a fan club. The Great Northern Railway Historical Society has between 23 and 24 thousand members world-wide. Their purpose is the preservation, study and history of all aspects of the Great Northern Railway.

What does that have to do with the Ferry County Historical Society? Apparently, quite a lot. Although all the Ferry County buildings and tracks associated with the Great Northern are gone, the road bed, the Curlew Lake trestle, the tunnel north of Curlew, and the Historical Society's collection of railroad photographs are still here and they can help both organizations accomplish their missions.

The Great Northern Railway Historical Society has purchased the right to reproduce some of the FCHS's historic photographs in a booklet called a "reference sheet". Some of the GN's members are experts at enhancing historic photos. They will give back to the FCHS images that are better than those they received.

The Great Northern Railway Historical Society also maintains a Heritage Fund which is used for grants to heritage organizations for exhibits, structures and other interpretive activities relating to the Great Northern. The FCHS, which has joined the GNRWHS, anticipates working closely with the organization in interpreting local railroad history to the public. Their resources also include a quarterly magazine, an annual calendar, a traveling model railroad exhibit, a fully functional retired G.N. locomotive called the "Hustle Muscle", and much more.

Right: Great Northern representatives left a box of wonderful souvenirs for promotional purposes!

Mr. Wellman sports a Great Northern Cap, pin, and Calendar.



# THANK YOU STONEROSE!

In an effort to better serve the public and to get "housekeeping" chores done without the distraction of visitors, the Stonerose Fossil Interpretive Center has stayed open this winter. This has allowed the FCHS museum to stay open for a few hardy winter visitors. The Stonerose staff turns the lights on for visitors as needed, monitors the heat, answers questions and opens the Kaufman Cabin for visitors if desired. Winter hours at the Stonerose Interpretive Center are Monday through Saturday, from 8 am until 5 pm.



## Annual Membership Meeting in March

The annual membership meeting of the Ferry County Historical Society will be held on March 25th at 5:30 P.M. in the museum across from the park in Republic. Refreshments will be available. If you want to learn more about local history, help interpret our history to the public, and help to determine how the Ferry County Historical Society operates this is your chance! Only paid up members are eligible to vote on FCHS business.

Board meetings are held on the fourth Tuesday of every month at the same time and place and are open to all members.

Membership applications are available at the Stonerose Fossil Interpretive Center across from the park in Republic.

*Annual dues are payable at the following rates.:*

Individual \$20.00	Family \$40.00	Business \$50.00
Donor \$100.00	Lifetime membership \$500.00	



The Ferry County Historical Society is a nonprofit organization (501(3)(c)) which places its primary emphasis on preserving & exhibiting artifacts related to the rich history of Ferry County. Come and visit our small self-touring museum which is located at 15-2 N. Kean Street in Republic (across from the city park). Featured are mining and geology displays, a Native American exhibit and an array of interesting photographs relating to the turn of the century local businesses and activities. Hours are Mon-Sat. from 8 am-5 pm through May. Open daily May-September. Support us by becoming a member today! Board Meetings are the 4th Tuesday of the month (no December meeting) at 5:30 pm. The public is welcome to attend.